

Software Installation Instructions For A Chinese MB STAR Diagnosis System (SDS) C3 BenzWorld Member: ricebubbles

Table of Contents

1. Revisions.....	1
2. Acknowledgement	1
3. Introduction.....	1
4. SDS Purchase Details	2
5. SDS Applications.....	2
6. How to Setup and Configure the SDS Software.....	3
6.1. Host and Guest Communications Serial Port Settings.....	3
6.2. VMware Player Installation	4
6.3. Drive Configurations	5
6.4. VMware Player Application	6
6.5. Virtual Machine Settings	7
6.6. Virtual Machine Desk Top.....	8
6.7. Virtual Machine COM2	9
6.8. Virtual Machine Desk Band.....	9
6.9. Virtual Machine Folder 'mb activate tools'	12
6.10. MUX Configuration.....	13
6.11. Xentry and EPC Configuration.....	25
7. Powering Off Xentry.....	35
8. Powering Off Virtual Machine	36

1. Revisions

Version 01: 19th July 2012 (Original document.)

2. Acknowledgement

Benz World Members, especially MBSL550, Noodles, eric242340, Ne3M, Okiebenz, bhatt, Mackhack, Diesel_Benz, grinich, robledoch, BenzModz et alia and Taztheman at JCRecordings Software Forum.

<http://www.benzworld.org/forums/r230-sl-class/1573730-chinese-mb-star-scanners.html>

http://www.jcrecordings.com/index.php?option=com_kunena&func=view&catid=3&id=9201&Itemid=571#9201

3. Introduction

This document is part of my SDS quartet of documents which I produced after months of research and experimentation with a Chinese SDS.

- SDS What is it.
- SDS Instructions For Connecting and Using
- SDS Software Installation Instructions
- SDS Transfer From External HDD to Internal HDD

I do not profess to be an expert in SDS, far from it, but I do find that keeping the important information in one or two documents in as simple a form as possible helps me in future when I have a need to revisit the subject. It may therefore be of use to other BenzWorld members. As always any feedback is much appreciated.

This document only applies to a SDS C3 working on a laptop without a connection to the Internet.

I am happy to just use the SDS Workshop Information System (WIS), and the Diagnosis Assistance System (DAS) accessed via the SDS Xentry master application. Another favourite application is StarFinder accessed from the Virtual Desktop, but nothing I use now accesses the Internet.

The SDS as supplied had very brief and confusing installation instructions. I have attempted to interpret and document what was actually required. It assumes that the RS232 communications ports have been configured as per my document, "SDS Instructions For Connecting and Using". All of the original instructions have been included but the parts relating to connecting via the Internet have been greyed out as they are not relevant to my situation.

I have also included my version of the SDS and VMware software installation instructions in document form rather than video form, which I found impossible to use in real time.

4. SDS Purchase Details

Item: Mercedes Benz MB STAR C3 new version 11/2011

Model: V-249

Purchased February 2012 and received about March 2012.

Supplied by: Vida Shop <http://www.vidaobd2.com/Mercedes-Benz-MB-Star-C3-new-version.html>

Email: sales@vidaobd2.com

Reference: Virtual Machine STAR Utilities application, my system details are:

SDS COMPACT4 (I don't know why it says Compact4 here.)

Release R2.0, V11/2011, (2011-11-09)

5. SDS Applications

In my case the MB Star C3 software runs in a virtual machine, which is basically a second operating system which I believe produces an image of an IBM ThinkPad Desk Top.

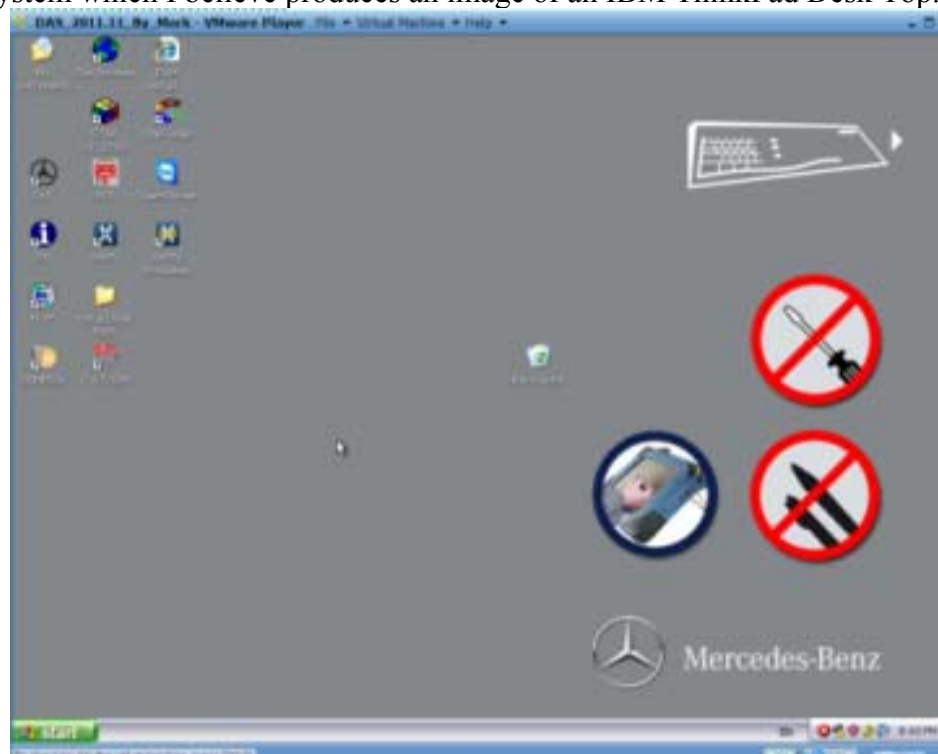


Figure 1 SDS Virtual Machine Desktop

The SDS as purchased contained these applications/programmes:



Figure 2 SDS Virtual Machine Application Icons

My Chinese SDS as purchased contained these applications/programs. My favourites are in yellow highlighter.

- Info: Contains SDS guide and installation pdf documents.
- EWAnet: Accesses the Electronic Parts Catalogue (EPC) via a local intranet connection.
- Folder 'mbactivatetools': contains setup and instruction videos.
- PL65: Parts price List in Euros.
- SDmedia: Contains Video and PDF lessons on MB vehicles.
- StarBrowser: Opens iDaimler Logon Home Page.
- StarFinder: Shows photographic location of vehicle parts using MB part number.
- Star Utilities: Application containing utility programmes for diagnosing status of the SDS.
- Team Viewer: Allows access by others via the Internet.
- Xentry: Gives direct access to four applications;
 - DAS
 - TIPS
 - WIS/ASRA
 - EPC.
- Xentry SIM: Runs Xentry in simulation mode without a vehicle connected and is useful for training purposes.

6. How to Setup and Configure the SDS Software

6.1. Host and Guest Communications Serial Port Settings

Instructions for Host and Guest communications serial port settings are in my document, 'SDS Instructions For Connecting and Using'.

In summary my settings are:

- PCMCIA RS232 Cardbus Adapter: COM2 9,600 bps baud rate and 14.7456MHz crystal frequency.
- Guest COM2: 9,600 bps

Once the PCMCIA and COM2 Ports are configured and the MUX is connected and talking to the car, my Virtual Machine Desktop 'Desk Band' icons look like this. (Unlocked padlock.)



Figure 3 SDS Virtual Machine Desktop Desk Band Icons MUX Unlocked

The Xentry application needs to be configured with special keys so that the DAS and WIS applications will send and gather data from the vehicle under diagnosis.

When my Xentry is configured correctly and then opened and has communicated with the car, the 'Desk Band' MUX icon changes from Unlocked to Locked.



Figure 4 SDS Virtual Machine Desktop Desk Band Icons MUX Locked

6.2. VMware Player Installation

Run the VMware Player installer program by opening the file 'VMware-player.exe' from the SDS HDD under Folder 'VMwarePlayer'. I have now reinstalled VMware Player several times and the following results may be slightly different to the initial installation results.

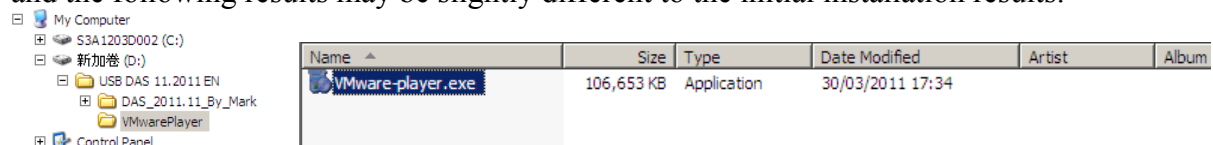


Figure 5 VMware Player Installation Programme

The VMware Player creates virtual switches as needed. The three default virtual network switches are mapped to specific networks as follows.

Switch Name	Network Type
VMnet0	Bridged
VMnet1	Host-only
VMnet8	NAT

You only need to use these Network settings if you are planning on using Internet connections. If only using the COM2 serial cable connection to the MUX, there is no need for these Network Settings.

After rebooting the laptop, Control Panel, Network Connections shows two extra connections, viz:

VMware Network Adapter VMnet1 which is a VMware Virtual Ethernet Adapter for VMnet1, with Wireless External IP 192.168.102.001 and
 VMware Network Adapter VMnet8 which is a VMware Virtual Ethernet Adapter for VMnet8. with Wireless External IP 192.168.243.001
 VMnet0 is hidden from view.

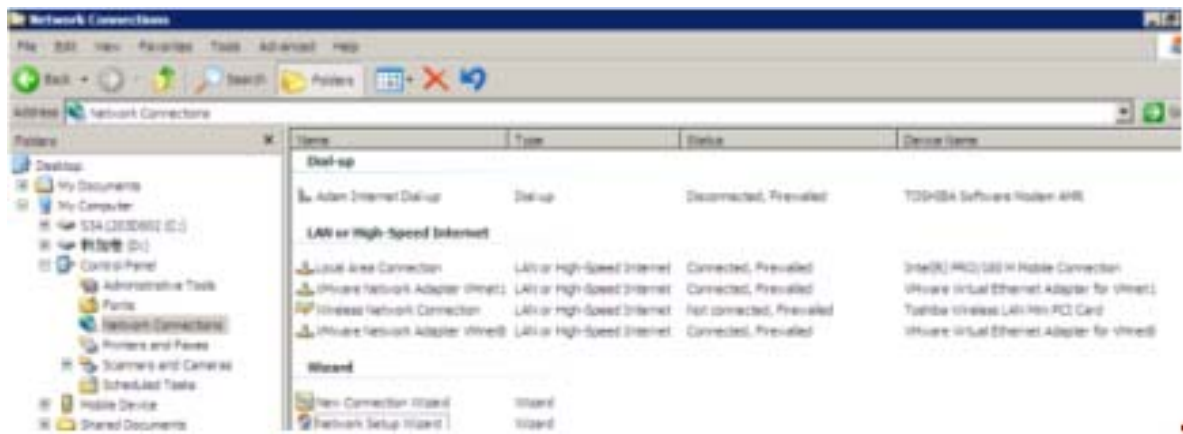


Figure 6 Host Laptop Network Connections

Check VMnet1 Properties, Internet Protocol (TCP/IP), Properties;

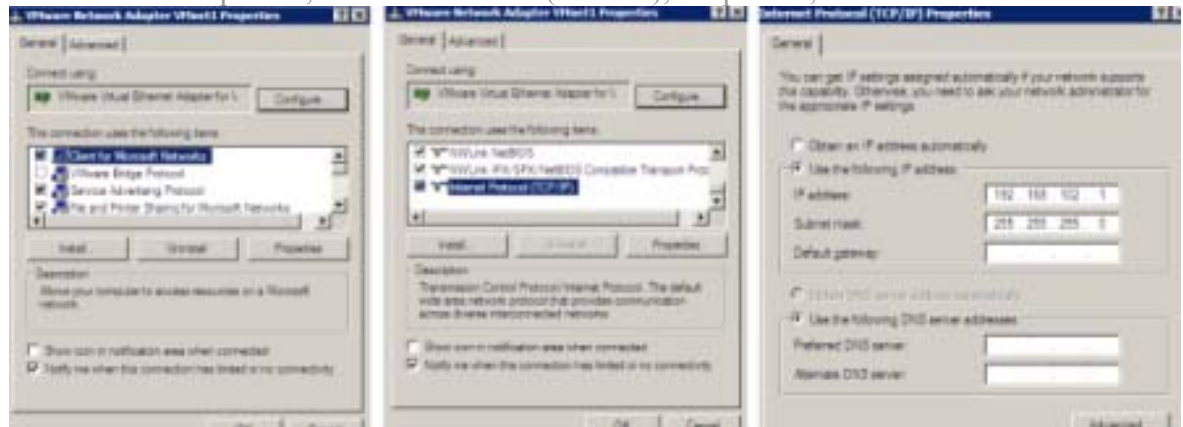


Figure 7 Host VMnet1 Properties

Note VMware Bridge Protocol is not ticked.

Check VMnet8 Properties, Internet Protocol (TCP/IP), Properties;



Figure 8 Host VMnet8 Properties

Note VMware Bridge Protocol is not ticked.

6.3. Drive Configurations

After installation these are the drive configurations using an external HDD and Virtual Machine as the Guest system running the SDS software. (Later note: The drive configurations using a partitioned internal hard drive for the SDS software are identical to these.)

6.3.1. Host Windows Laptop Drive Configuration



Figure 9 Host Windows Laptop Drive Configuration

6.3.2. Guest VMware Virtual Machine Drive Configuration



Figure 10 Guest VMware Virtual Machine Drive Configuration

6.4. VMware Player Application

Run VMware Player on the Host Laptop. This opens the VMware Player window, “Welcome to VMware Player.



Figure 11 VMware Player Home Page

Click on ‘Open a Virtual Machine’ and browse to the VMware Configuration File (*.vmx) on the HDD.



Figure 12 VMware Player Folder

In my case in folder 'DAS_2011.11_By_Mark' open file 'DAS_2011.11_By_Mark.vmx'. This now puts a link to the STAR DAS Virtual Machine in the VMware Library. Note the Virtual Machine is powered off at this stage.



Figure 13 VMware Player Home Page and SDS File

6.5. Virtual Machine Settings

Before playing the Virtual Machine program 'DAS_2011.11_By_Mark' configure the Virtual Machine settings.

Highlight the file 'DAS_2011.11_By_Mark' in the VMware Library.

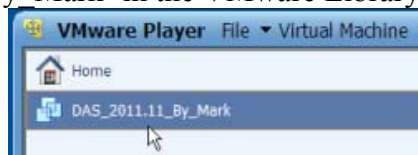


Figure 14 Highlight the VMware Player SDS File

Then click on 'Edit virtual machine settings'. Produces:

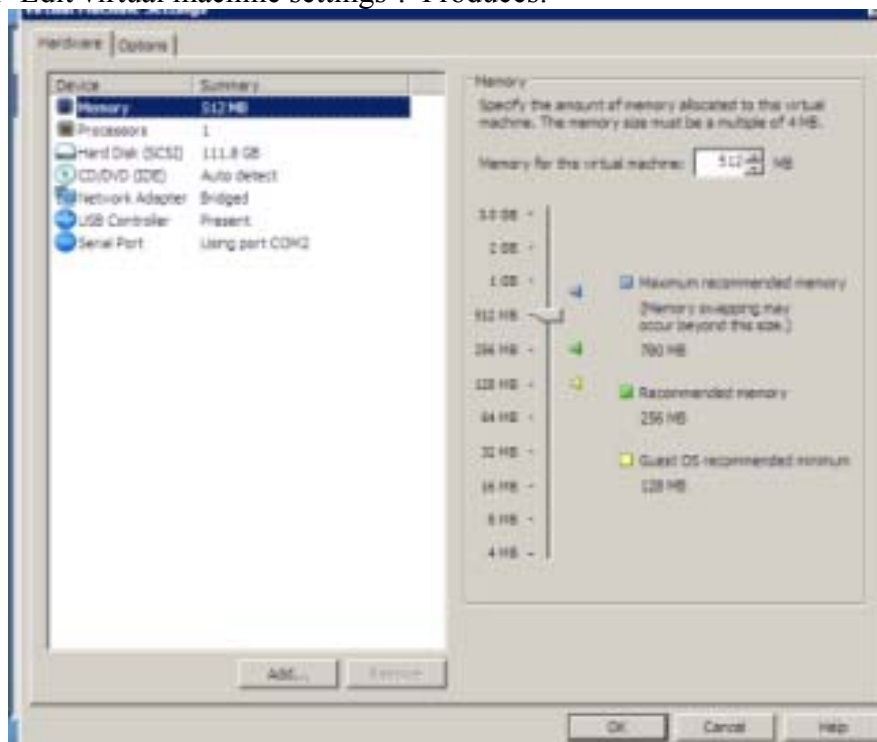


Figure 15 Virtual Machine Settings

6.5.1. Virtual Machine Network Adapter Settings

Click on Virtual Machine, Settings, Hardware and select Network Adapter (if not shown add one). Set Properties to **Bridged** and **Connected directly to the physical network**. Checking the box 'Replicate physical network connection state' is optional and a good idea if the pc is a laptop. As you move from one wireless network to another, the IP address is automatically renewed

Bridged networking connects a virtual machine to a network by using the host computer's network adapter. If your host computer is on a network, this is often the easiest way to give your virtual machine access to that network. The virtual network adapter in the virtual machine connects to the physical network adapter in your host computer, allowing it to connect to the LAN the host computer uses.

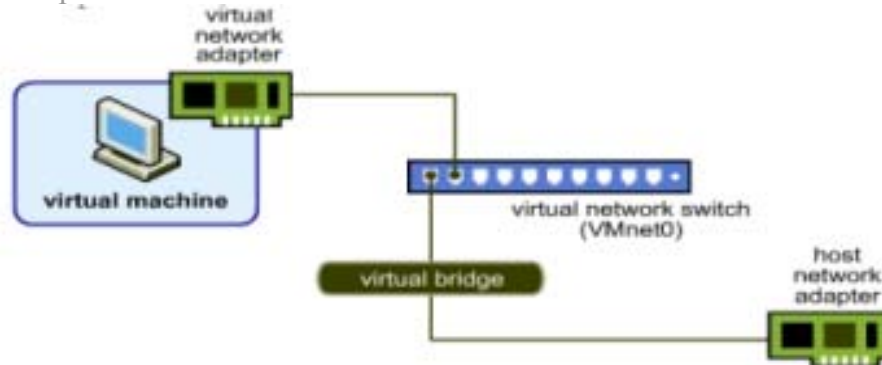


Figure 16 Virtual Machine Network Adapter Settings

6.5.2. Virtual Machine COM Port Setting

Click on Virtual Machine, Settings, Hardware and select Serial Port 'Using port COM2'. If it is not using COM2 it will need to be changed once the Virtual Machine is running.

6.6. Virtual Machine Desk Top

Open a Virtual Machine called 'DAS_2011.11_By_Mark' to produce the Virtual Machine Desk Top.

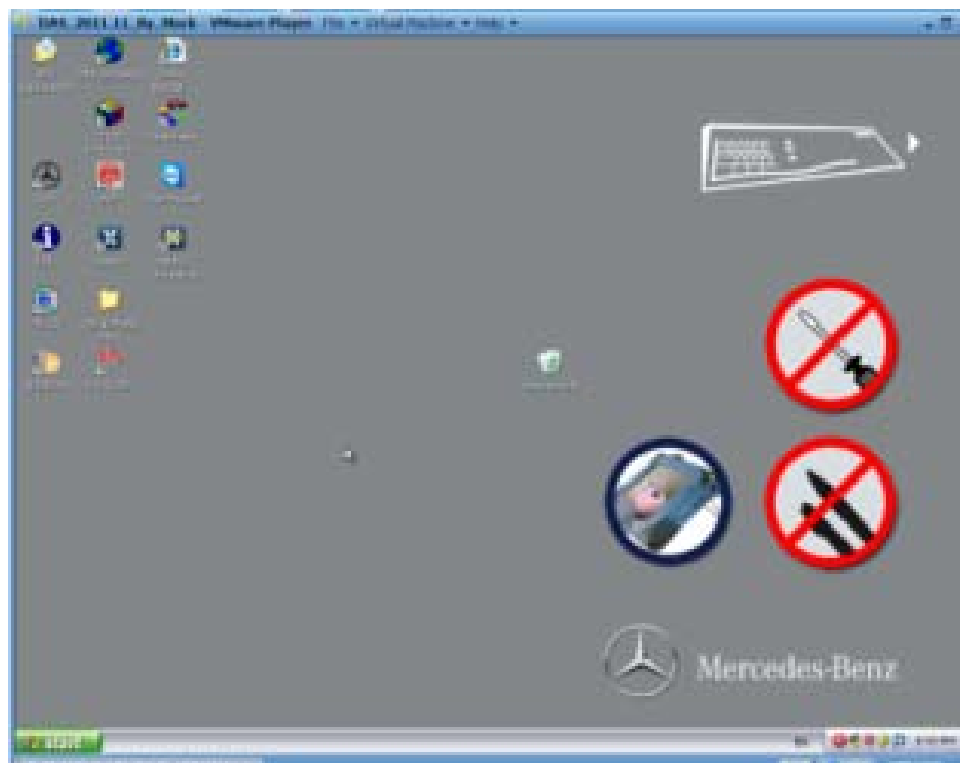


Figure 17 Virtual Machine Desktop

6.7. **Virtual Machine COM2**

After the Virtual Machine is running, set Virtual Machine Desktop, Start, Control Panel, System, Hardware, Device Manager, Ports (COM & LPT).

Right click Communications Port (COM2) and select Properties, Port Settings, and set Bits per second to ~~19,200~~ 9,600.

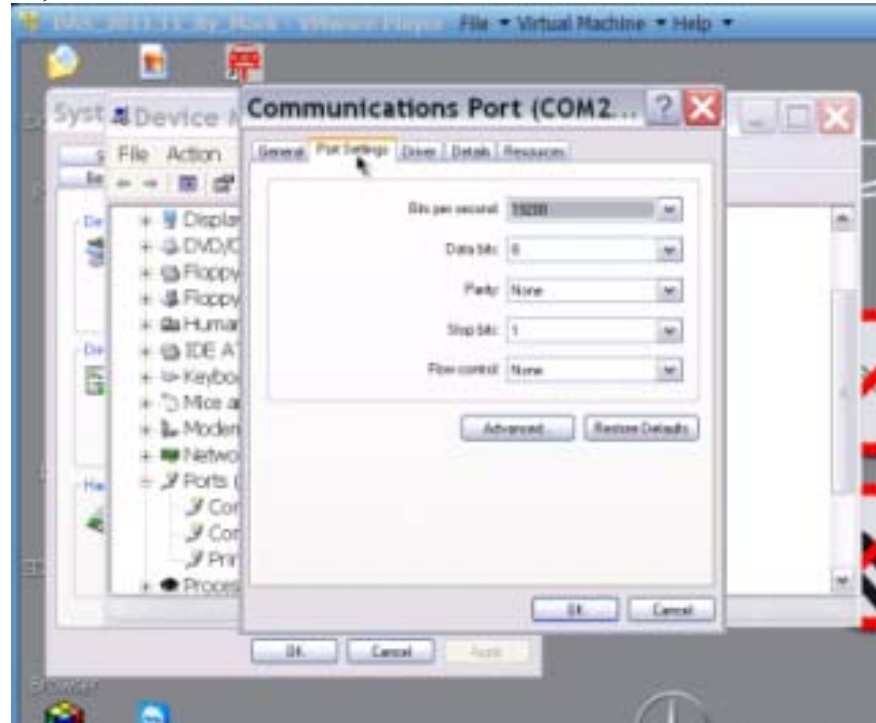


Figure 18 Virtual Machine Communications Port (COM2)

If the Communications Port is not set to COM2 do so by using the Advanced Button.

6.8. **Virtual Machine Desk Band**

Once the Virtual Machine is running the SDS software, the Virtual Desktop Tool Bar shows the 'Desk Band' group of icons.



Figure 19 Virtual Machine Desk Band Icons

The 'Desk Band' group of icons is used to access the 'SDnetControl' application which is used to configure the SDS. The trick is to click **ONCE** on the 'Desk Band' icon to open 'SDnetControl'. Be patient as it takes several minutes to open.



Figure 20 Virtual Machine SDnetControl Application

Now for a bit of background on the MUX and its operating modes.

3.3 Set Operating mode

The display in the deskband adapts to the operating mode selected and the hardware used (see also section 4.3)

The connection type is displayed in the workshop network /Internet on the **left** side of the Star Diagnosis system.

The connection type to the multiplexer is displayed on the **right** side of the Star Diagnosis system.

Figure 21 SDS Operating Modes

The meanings of the MUX icons are:

3.4 Multiplexer Display

The deskband displays information on the multiplexer:

Selected multiplexer

1. No multiplexer selected (e.g. status when delivered)
2. Part D selected (automatic selection)
3. SDconnect (numbers 1 to 40) selected

Multiplexer connection status

1. Not accessible - the multiplexer has been selected but is not accessible
2. Accessible - the multiplexer has been selected and is accessible
3. Connected - the multiplexer has been selected and an application is accessing the multiplexer at the moment.

See also section 3.

Figure 22 SDS MUX Icon Meanings

The Desk Band group of icons has three sensitive areas which open different parts of SDnetControl.

3.5 Click-sensitive areas in the deskband

The deskband has 3 click-sensitive areas. Various functional areas (shown in a tab) of the SDnetControl program window can be called up by clicking in one of these areas:

- "Network tools"
- "Connections"
- "Select MUX"

There is also a configuration tab. This cannot be called up directly (cf. section 4.5).

- "Configuration"



Figure 23 SDS MUX Icon Groups

The SDnetControl software has four functional areas for setting the various SDS configurations.

SDnetControl offers various functional areas that are summarized in the various tabs of the application window:

- A) "Connections"**
Configuration of the operating mode/connection type
- B) "Select MUX"**
Selection of the multiplexer
- C) "Configuration"**
Configuration of the Star Diagnosis system
- D) "Network tools"**
Checking server availability and network diagnosis

Details for this can be found in section 4.



SDnetControl adapts to the hardware currently in use. The available options and functions may vary according to the hardware.

Functions that are not available in SDnetControl are hidden.

Available functions are used in the same way across all platforms. These instructions do not discuss individual platforms.

Figure 24 SDS MUX Functional Areas

Then "Select MUX" function.

"Multiplexer" icon combination



Figure 25 SDS MUX Icon Meanings

6.9. Virtual Machine Folder 'mb activate tools'

My Virtual Machine Desk Top contains a folder called 'mb activate tools'.

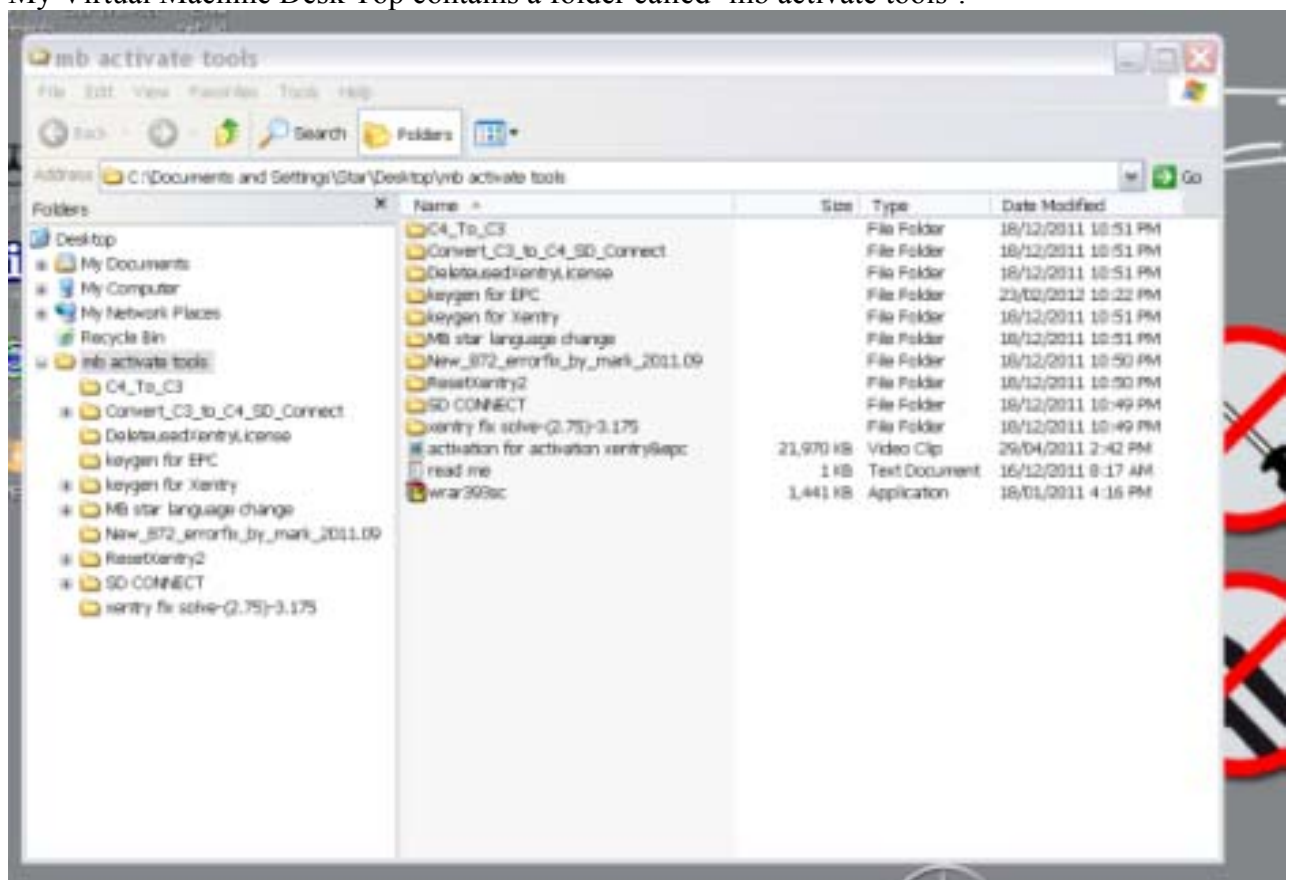


Figure 26 SDS Virtual Machine Folder 'mb activate tools'

When opened, this folder contains several more folders and files. The brief installation instructions are contained in a text file called 'read me'.

6.9.1. Error -(2.75)-3.175

Folder xentry fix solve-(2.75)-3.175 contains two files that seem to be related to the software older than 3 months issue.

6.9.2. Error 872

Folder 'New 872 errorfix by mark 2011.09' contains a file 'New_872_errorfix_by_mark.exe'. This also seems to be related to the MB 'Black List' of non standard MUXes. Apparently many of the MUXes that were not blessed by MB are now on a black list file in the 09-2009 DAS

update files. If you happen to upgrade and get a "CAL 872" error the DAS has detected a multiplexer that is not officially blessed.

Another web site says Error 872 is related to error code 2221-1.

Another site says Error 870 is related to the MB 'Black List' of non standard MUXes.

6.10. MUX Configuration

6.10.1. Types of MUX

Reference: Virtual Machine Desk Top, Folder "Info".



Figure 27 SDS Virtual Machine Information Icon

3.2 Hardware Used

The display in the deskband changes according to the hardware used.

So for example, a multiplexer that is selected via cable is automatically displayed as an icon and as "connected via cable" (applies particularly when using a Part D).

	Workshop Network /	Star Diagnosis System	Multiplexer
Star Diagnosis compact ³ w with SDconnect		compact ³	SDconnect
Star Diagnosis compact ³ w with SDconnect		compact ³ w	SDconnect
Star Diagnosis compact ³ with Part D		compact ³	Part D
Star Diagnosis basic ² with Part D		basic ²	Part D

Figure 28 SDS MUX Hardware

	Network /	System	
Star Diagnosis compact ³ w with SDconnect		compact ³	SDconnect
Star Diagnosis compact ³ w with SDconnect		compact ³ w	SDconnect
Star Diagnosis compact ³ with Part D		compact ³	Part D
Star Diagnosis basic ² with Part D		basic ²	Part D

Figure 29 SDS MUX Types

Later Note: SDconnect is the name given to the later version of MUX which uses a wireless connection instead of a cable. The following two sections are probably irrelevant for a SDS connected via serial cable to a Part D MUX.

6.10.2. SD Connect

My VMware Virtual Desk Top contains a folder called 'mb activate tools'.

Open folder 'SD CONNECT'.

Contains two folders;

'SD Network Configuration-EN'

'sdconnect_To_C3' and
eight files.

Sub Folder 'sdconnect_To_C3'

Contains application 'sdconnect_To_C3.exe'.

There is also an application which is probably for using a SDS C3 with a SDconnect MUX. It is the application 'C3_to_sdconcent.exe' NB typo.

6.10.3. Sub Folder 'SD Network Configuration-EN'

Contains a video tutorial 'SD network Configuration-EN.avi'

6.10.4. About IP Addresses and Ports

The **IP address** is a number that is used to identify a device. Every IP address is divided up into many ports. When one computer sends data to another computer, it sends it from a port on an IP address to a port on an IP address. A port can only be used by one program at a time. (A good analogy is the IP address is equivalent to a Cable TV link and a port is equivalent to a Channel on the Cable TV link.)

The **MAC address** is a unique number that identifies a specific hardware interface. It is a 12-digit hexadecimal number.

6.10.5. Video Tutorial for SD Connect

You only need to use these Network Settings if you are planning on using your SDS with a link to the Internet. If you are only using the COM2 cable connection to the MUX there is no need for these Network Settings.

In Virtual Machine, Folder 'mb activate tools', Folder 'SD CONNECT', run video file named: 'SD Network Configuration-EN.avi'.

What follows is my text and still image version of the Video Tutorial for SD Connect.

Step	mm:ss (Video Position)	Tutorial Instructions
1	00:00	Video starts with SDS Virtual Desktop running.
2	00:03	Run application 'SDnetControl' by clicking on Desk Band red/green icon group in bottom right corner.



Figure 30 SDS Virtual Machine Desk Band Icons

3	00:05	In window 'SDnetControl' click on tab 'Select MUX'.
---	-------	---

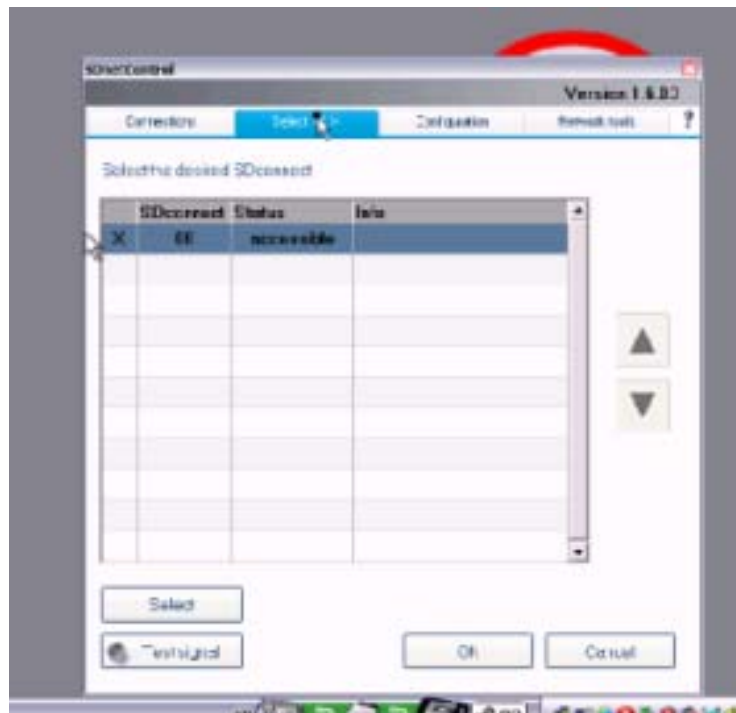


Figure 31 SDS Virtual Machine SDnetControl Select MUX

- 4 Click on button 'Test signal'.
Returns window 'Error message', 'Unknown communication error (750)'.

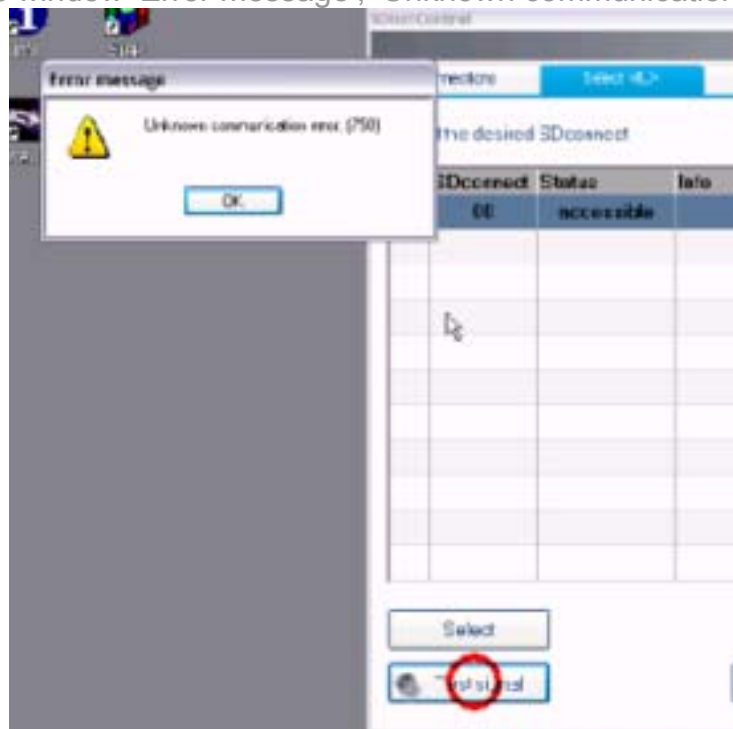


Figure 32 SDnetControl Error 750

- 5 Close this window.
6 00:12 Run Virtual Machine 'Network Connections' by clicking on icon 'Local Area Connection' in bottom right corner.

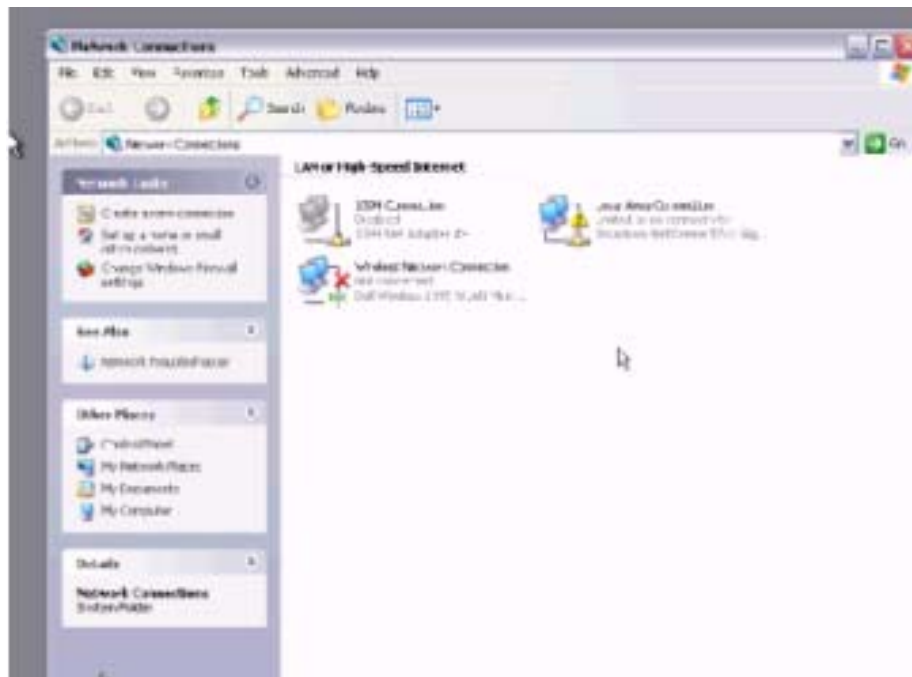


Figure 33 Virtual Machine Network Connections

- 7 Right mouse click 'Local Area Connection' and select 'Properties'.
- 8 00:16 Returns window 'Local Area Connection Properties'.
Click tab 'Advanced'
Highlight item 'Internet Protocol (TCP/IP)'.

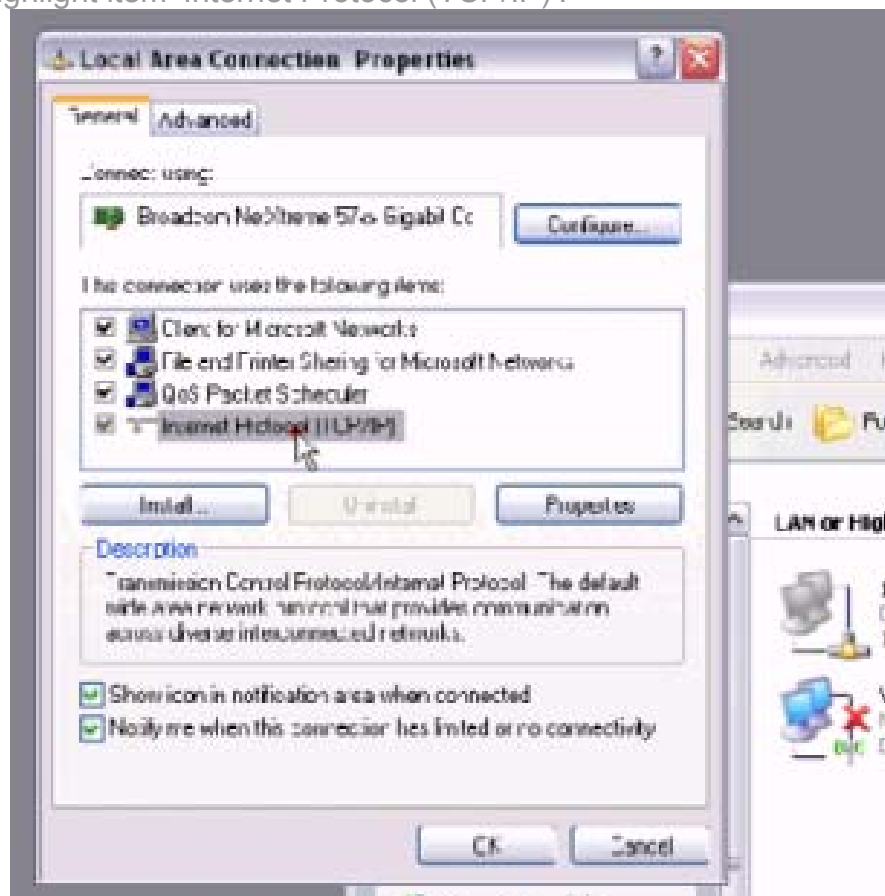


Figure 34 Virtual Machine Local Area Connections Properties

- 9 Click 'Properties' button.
- 10 00:18 Returns window 'Internet Protocol (TCP/IP) Properties'.
Click button 'Use the following IP address'.

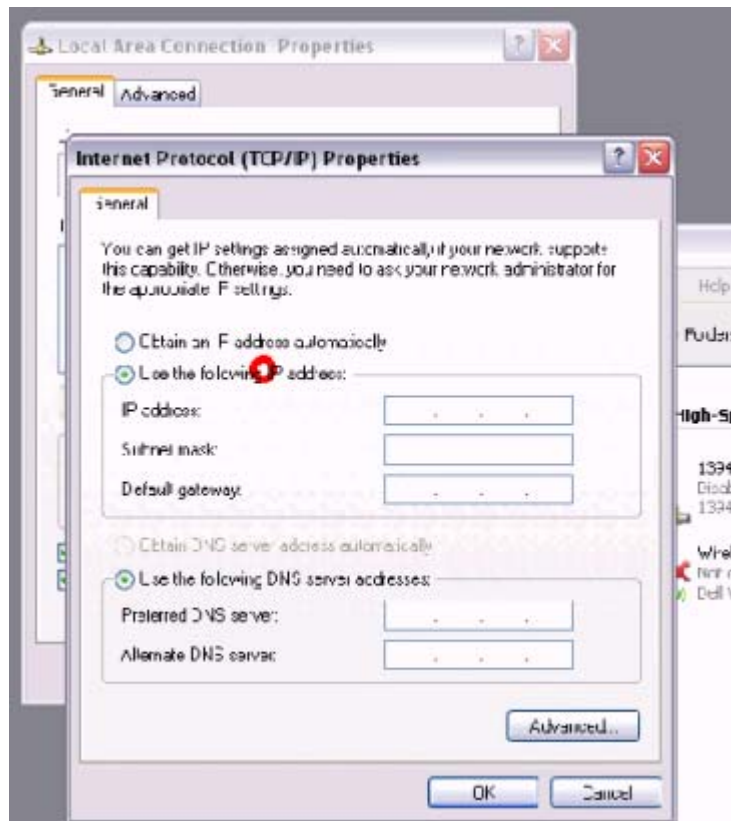


Figure 35 Virtual Machine Local Area Connections TCP/IP Properties

- 11 Enter IP address: 172.129.127.123. (This was my first interpretation. Later reviewing of video indicates IP address may be 172.029,127.123 or 172.029.127.129.) Other suggestions from the Internet show these possibilities;

172.029.127.119
 172.029.127.123
 172.029.127.128
 172.029.127.129
 172.029.168.112

Note they all have 172.029 as the first two sets.

However in Virtual Machine Desk Top, Folder "Info" it lists IP Addresses which **cannot** be configured on SDS as, 172.29.127.0 to 172.29.127.255.

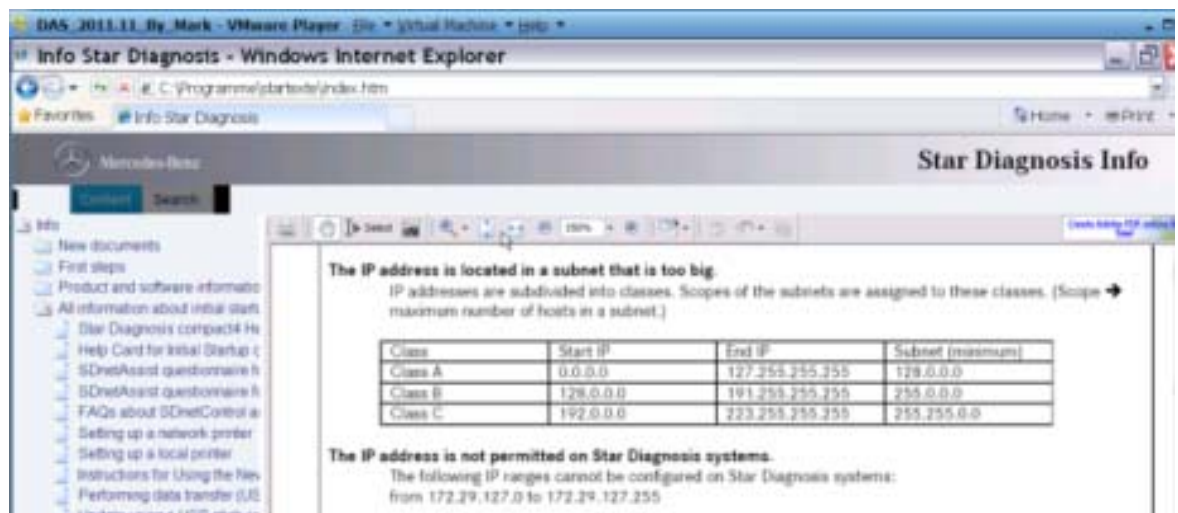


Figure 36 Virtual Machine Desktop Info Page

Click 'OK'

12 00:33 Close window 'Local Area Connection Properties'.

13 00:54 After a short while window 'Local Area Connection' icon in the bottom right corner shows current status:
'Local Area Connection is now connected', 'Speed 100.0 Mbps'.



Figure 37 Virtual Machine Local Area Connection Now Connected

Confirm by checking Virtual Machine, Control Panel, Network Connections, Local Area Connections. Shows status 'Connected'.



Figure 38 Virtual Machine Network Connections

Right click Local Area Connection, then select Properties and General Tab. Highlight Internet Protocol(TCP/IP).

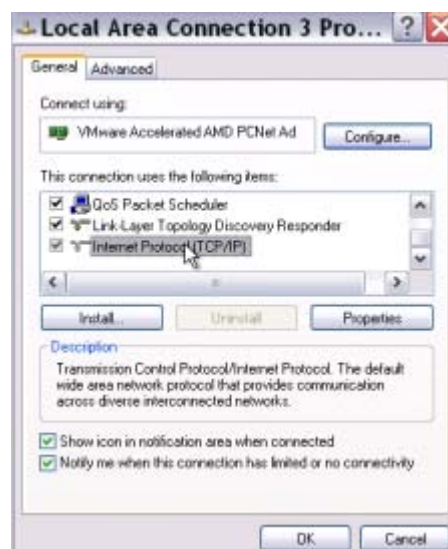


Figure 39 Virtual Machine TCP/IP Settings

Click Properties.

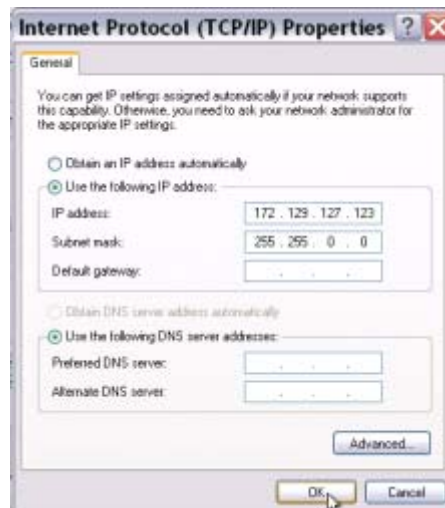


Figure 40 Virtual Machine TCP/IP Properties

Cancel out of all these windows back to the Virtual Machine Desktop Page. Note it can take a long while.

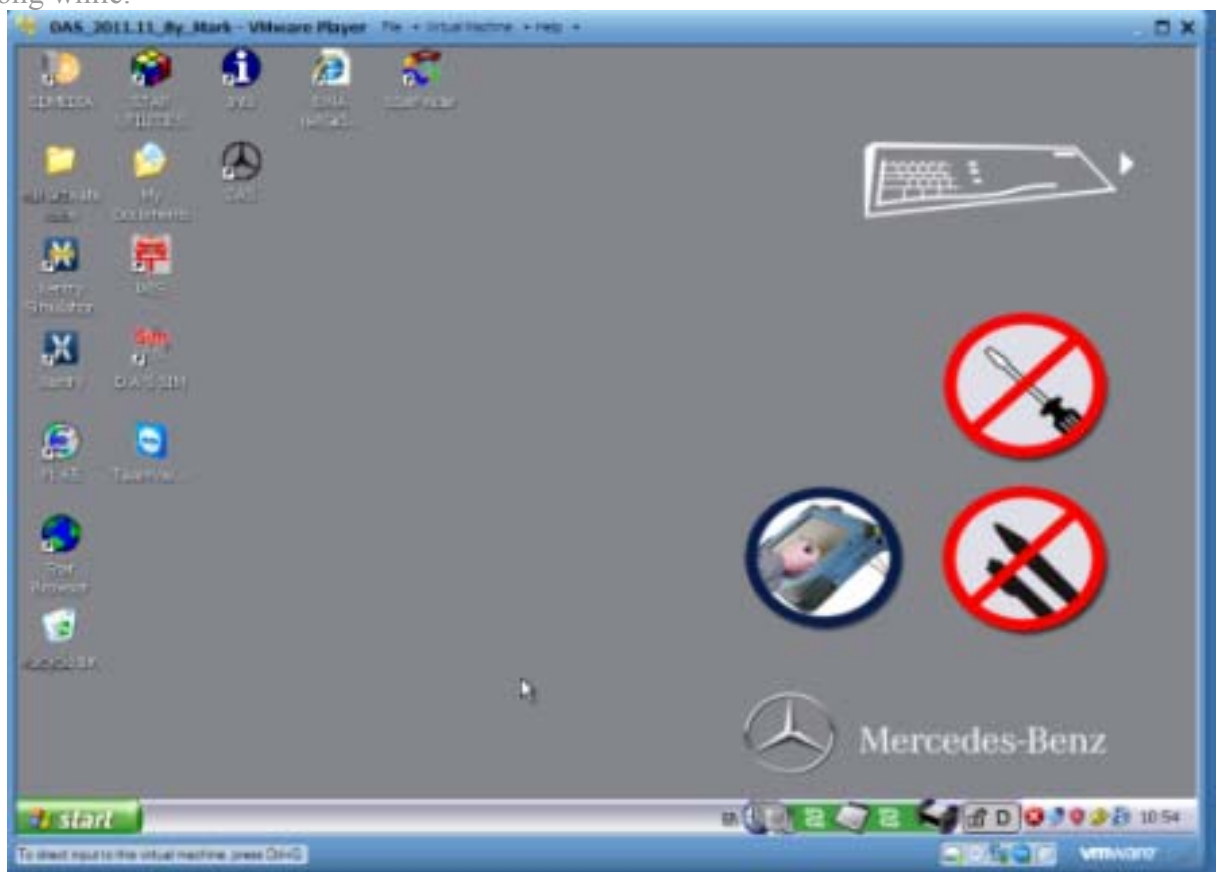


Figure 41 Virtual Machine Desktop

- 14 Close window 'Local Area Connection is now connected'.
- 15 01:01 Run application 'SDnetControl' again by clicking **once** on Desk Band red/green icon group in bottom right corner.



Figure 42 Virtual Machine Desk Band Icons

Opens window SDnetControl.

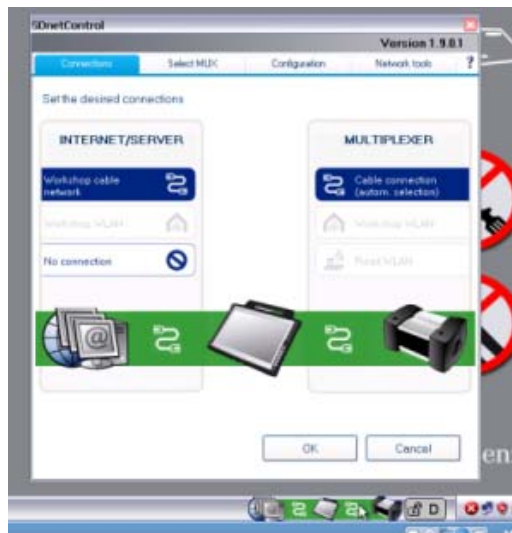


Figure 43 SDnetControl

- 16 01:11 In window 'SDnetControl' click on the tab 'Select MUX'. Click on button 'Test Signal'.

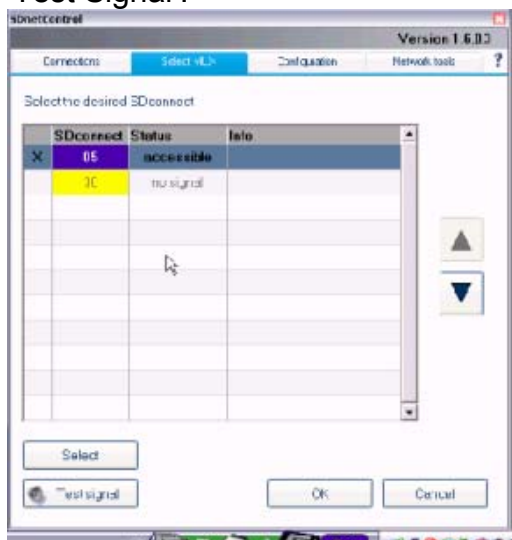


Figure 44 SDnetControl Select MUX

With my automatic connection to a 'Part D' MUX the 'Test Signal' button is greyed out and is not selectable.

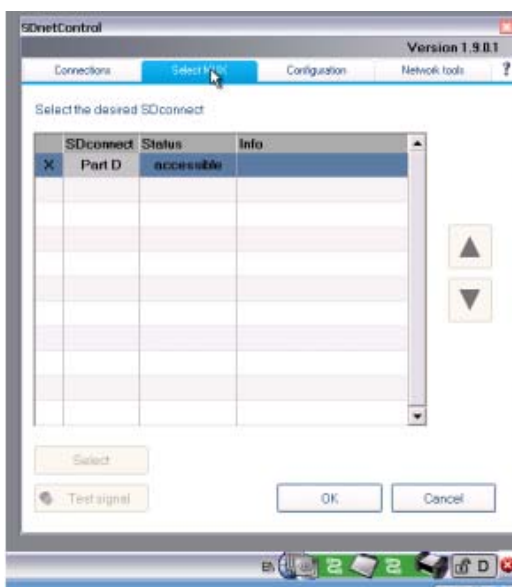


Figure 45 SDnetControl MUX Accessible

- 17 01:14 In window 'SDnetControl' click on the tab 'Configuration'.
Returns new window 'Warning'. 'Caution Changing the configuration can impair.... Do you want to change configuration?'
Click 'Yes'.



Figure 46 SDnetControl Warning message

- 18 01:16 Click on tab 'MUX'.
Click on button 'Register Configuration'.
19 01: 20 Returns window 'SDconnect Toolkit', 'The toolkit is being initialized'.
And then returns information:

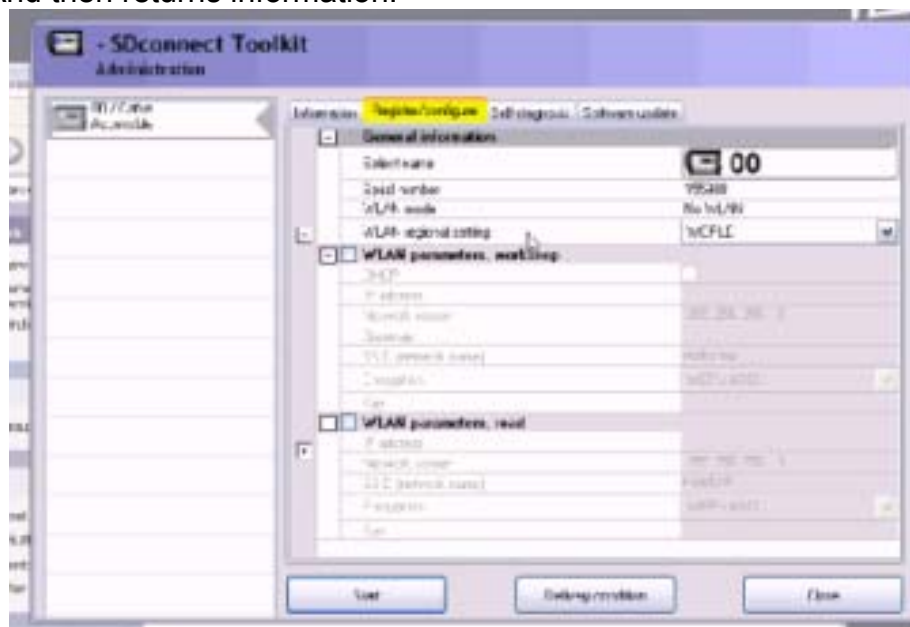


Figure 47 SDconnect Toolkit Configuration

- 20 01:25 Click 'Select name' '00' in top right corner.

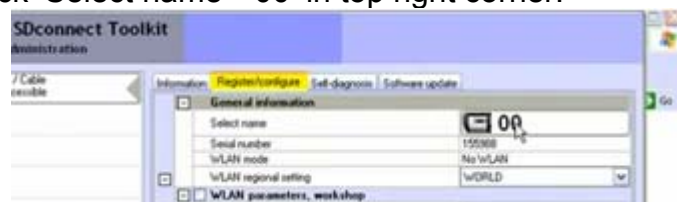


Figure 48 SDconnect Toolkit Select MUX

- 21 Returns window 'SDconnect Toolkit'.
22 01:30 Highlight '05' as the new name for SDconnect.
Click 'OK'.



Figure 49 SDconnect Toolkit Administration

- 23 01:31 In 'WLAN parameters, read' area of window 'SDconnect Toolkit'
 Enter IP address: 192.168.002.111.
 Select Encryption: 'WEP/Hex'
 Enter Key: (NB use appropriate key for local wireless Network ISSD.)

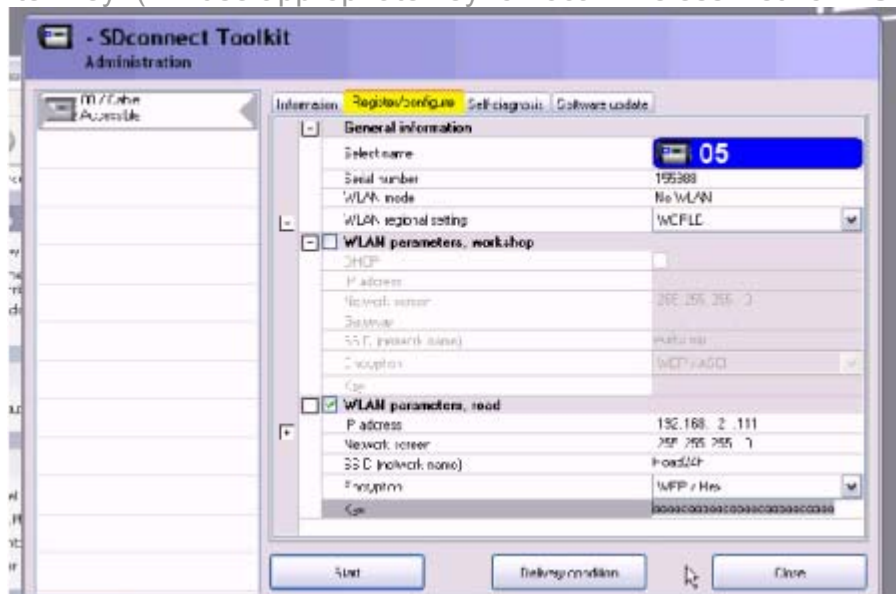


Figure 50 SDconnect Toolkit WLAN Parameters

- 24 01:54 Highlight and right click copy the entered key to the clip board for later use.
 Click 'Start'.
 25 02:05 Returns a window 'Online update: Connection failed'.

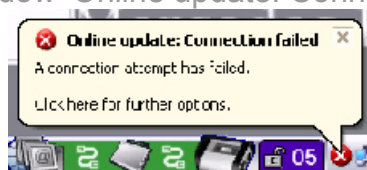


Figure 51 Network Connection Error

- 26 Close this warning window.

27 Then open window 'SDconnect Toolkit device Configuration'.

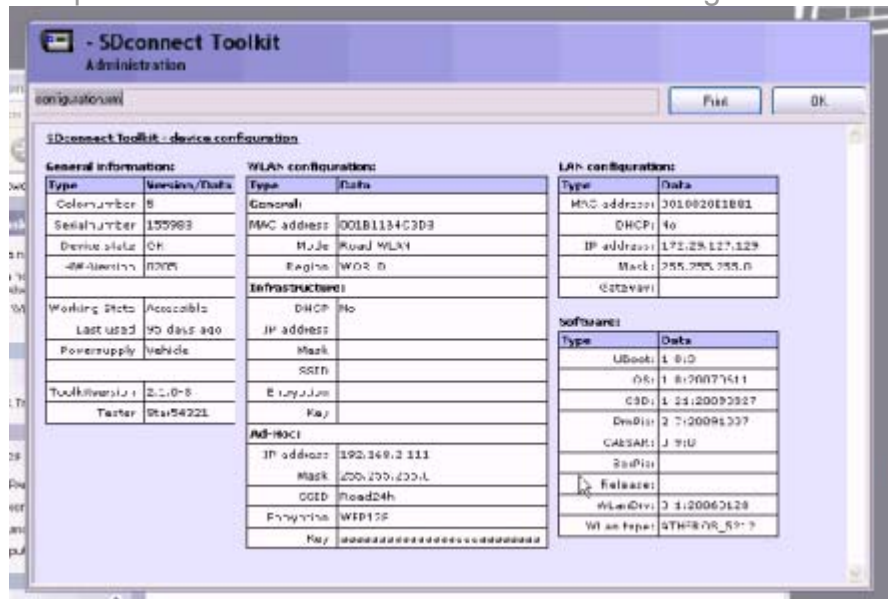


Figure 52 SDconnect Toolkit Device Configuration

- 28 Check configuration settings and click 'OK' in top right corner.
 29 02:10 Close window 'SDconnect Toolkit'.
 30 02:21 In window 'Network Connections' click 'Local Area Connection'.
 Returns a warning 'Local Area Connection, A network cable is unplugged'.

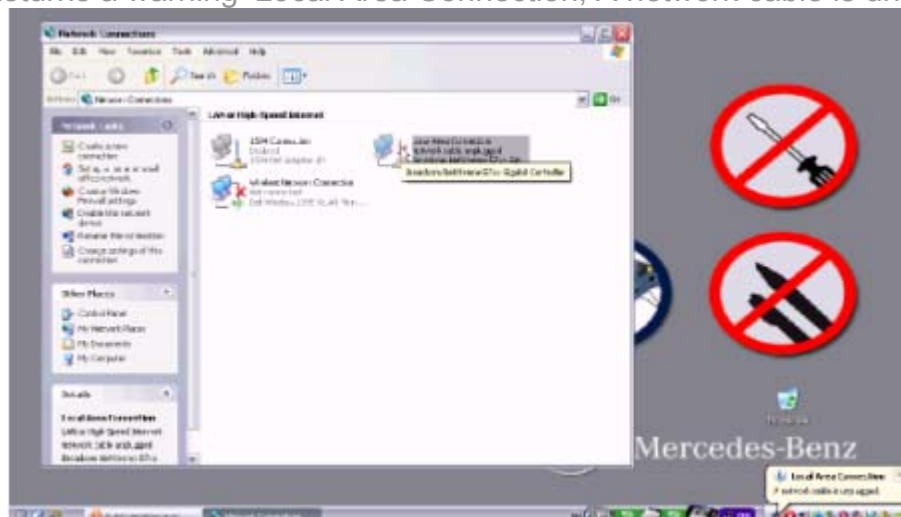


Figure 53 Virtual Machine Local Area Connection Error

- 31 02:23 Right mouse click 'Wireless Network Connection',
 Select 'View available networks'.
 Click 'Refresh network list'.
 32 02:41 Right mouse click 'Wireless Network Connection'.
 Click 'Properties'.
 Returns window 'Wireless Network Connection Properties'.
 33 Click tab 'Wireless Networks'.

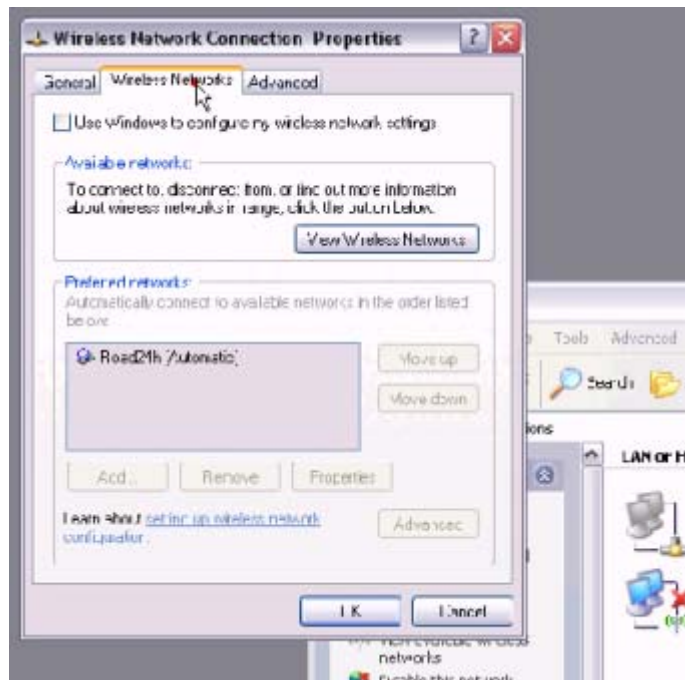


Figure 54 Virtual Machine Wireless Network Connection Properties

- 34 Tick 'Use windows to configure my wireless network settings'.
- 35 Select the appropriate wireless network SSID for your local use.
- 36 Right mouse click 'Paste' the Key saved previously.
- 37 Click 'Connect'.
- 38 03:11 In window 'Network Connections' right mouse click 'Wireless Network Connections'.
- Click 'Properties'.
- Returns window 'Wireless Network Connection Properties'.
- 39 Select 'Internet Protocol (TCP/IP)'.
- Click 'Properties'.
- 40 Enter IP address: 192.100.002.123.
- Enter Subnet mask: 255.255.255.011.
- Click button 'OK'.
- 41 04:03 Right mouse click on Virtual Machine Desk Top and select 'Refresh'.
- 42 Returns 'Wireless Network connection (to Road24h) is now connected'.



Figure 55 Virtual Machine Wireless Network Connection Connected

- 43 Close all open windows to return to Virtual Machine Desk Top.
- 44 Run application 'SDnetControl' again by clicking **once** on Desk Band red/green icon group in bottom right corner.



Figure 56 Virtual Machine Desktop Desk Band Icons

- 45 04:24 In window 'SDnetControl' click on the tab 'Select MUX'.
- Shows '05' is now 'accessible'.
- Click on button 'Test Signal'.

- 46 Close all open windows to return to Virtual Machine Desk Top.
- 47 Right click on Virtual Machine Desk Top and select 'Refresh'.
- 48 04:35 Video tutorial ends.

6.11. Xentry and EPC Configuration

The supplied instructions state: "To activate Xentry and EPC on your laptop you can find a video manual in mb activate tool".

Run the file 'activation for activation xentry&epc.avi' in folder 'mb activate tools' to see the Video Tutorial.

6.11.1. Video Tutorial for Xentry and EPC Installation

What follows is my text and still image version of the Video Tutorial. (Slight differences encountered on a repeat installation are highlighted in [square brackets]). Each time I do a repeat I raise the Customer and Company Number eg '1111-1111' up one level.

Start Host laptop and change date to date of SDS. (November 2011).
Start in the Virtual Machine Desktop.

- | Step | mm:ss (Video Position) | Tutorial Instructions |
|------|------------------------|---|
| 1 | 00:00 | Video says to open folder 'Xentry_keygen1.1' This folder doesn't exist! |
| 1 | | Open folder 'mb activate tools' on Virtual Machine Desk Top. |
| 2 | | Open folder 'keygen for Xentry'. |
| 3 | | Open folder '1111-1111' [or higher number if existing, eg 2222-22222]. |
| 4 | 00:05 | Video says to delete file 'regkey'. Later note: file 'regkey' is located in folder 'keygen for Xentry', but I do not delete file. |
| 4 | | Rename file 'regkey' as '1 old regkey' or '2 old regkey' etc. |
| 5 | | Go back to folder 'keygen for Xentry'. |
| 6 | | Open application 'Xentry Developer_keygen'. |

Xentry Developer_keygen.exe 2,216 KB Application 2011-03-17 23:38
This produces a window 'WinLicense' with the error message "Sorry this software cannot be run without a license key."



Figure 57 Virtual Machine WinLicense Error

- 7 Drag this window out of the way.
- 8 00:12 Open the folder 'Keygen' in the window 'keygen for Xentry'.
- 9 Open the application 'WlGen_Xentry'.

WlGen_Xentry.exe 3,227 KB Application 2005-08-05 02:01

Opens the window 'Specific Key Generator, Xentry Generator'.



Figure 58 WLGen_Xentry Specific Key Generator

10 00:14 Click on 'License Manager'.

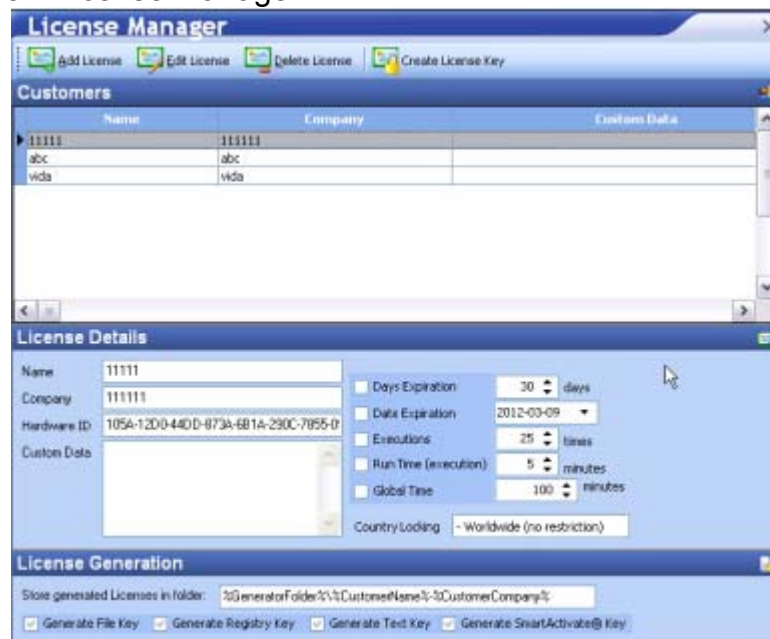


Figure 59 WLGen_Xentry License Generator

11 Click on 'Edit License' button at top.



Figure 60 WLGen_Xentry Edit License

12 Change Customer to 11111 [22222].

13 Change Company to 111111 [22222].

14 00:28 Bring window 'WinLicense' to front of screen.

- 15 Copy Mach iD: address (eg 6059-12D0-24DD- etc.) and paste into field 'Hardware ID' in 'Edit License' window.
- 16 Click button 'Update'.
- 17 00:38 Now go to 'License Manager' window and click on 'Create License Key'. Returns a window 'License Generator' with the message “Keys successfully generated in folder C:\Documents and Settings\star\Desktop\mb activate tools\Keygen for Xentry\Keygen\11111-11111 [22222-22222]”



Figure 61 WLGen_Xentry License Generator

- 18 Click 'OK' button. Should now see new Customer in 'License Manager' with the name 11111 [22222] and Company name 111111 [222222].

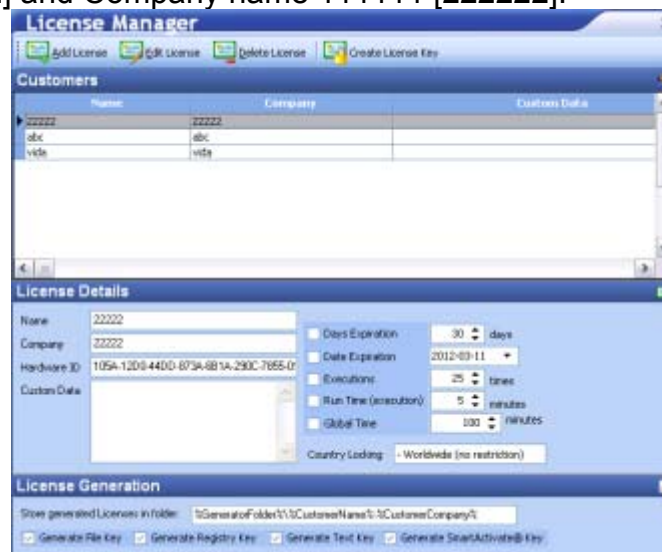


Figure 62 WLGen_Xentry License Manager

- 19 00:42 Close window 'License Manager'.
- 20 Close window 'Specific Key Generator'.
- 21 Observe the window folder 'Keygen'. There should be a new folder at the bottom called 11111-11111 or [22222-22222] etc.

📁 22222-22222 File Folder 2012-03-11 16:06

- 22 00:47 Open the folder 11111-11111 or [22222-22222] etc.
- 23 Right click on the DAT File 'regkey.dat' and click 'Copy'.
- 24 00:52 Go back two folders by clicking the upfolder button twice to window 'Xentry_keygen1.1' **which doesn't exist**. Should go to folder 'keygen for Xentry' instead.
- 25 Paste file 'regkey.dat' copied to clipboard at step 23 into this folder. This replaces the file deleted by renaming as '1 old regkey' in step 4.
- 26 00:57 Check registration by clicking on application 'Xentry Developer_keygen'. Returns the window 'WinLicense' and should show 'This application has been registered to 11111-11111 or [22222-22222] etc.'

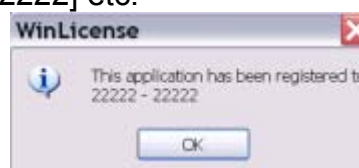


Figure 63 WinLicense

27 Click 'OK'. Returns a window 'Xentry Developer V1.1.0' and shows license information.

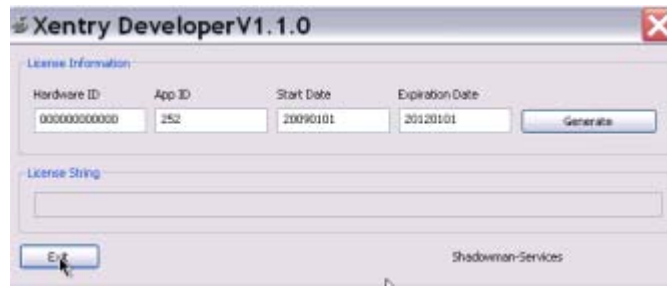


Figure 64 Xentry Developer V1.1.0

28 00:59 Close the folder behind the window 'Xentry Developer V1.1.0' called 'Xentry_keygen1.1' **which doesn't exist**. Use folder 'keygen for Xentry' instead.

30 Move/drag window 'Xentry Developer V1.1.0' to right of screen.

31 01:03 Open Program 'STAR UTILITIES' from the desktop.



Figure 65 Star Utilities Icon

32 Click button 'StartKey manager' at top of 'STAR Utilities' window.

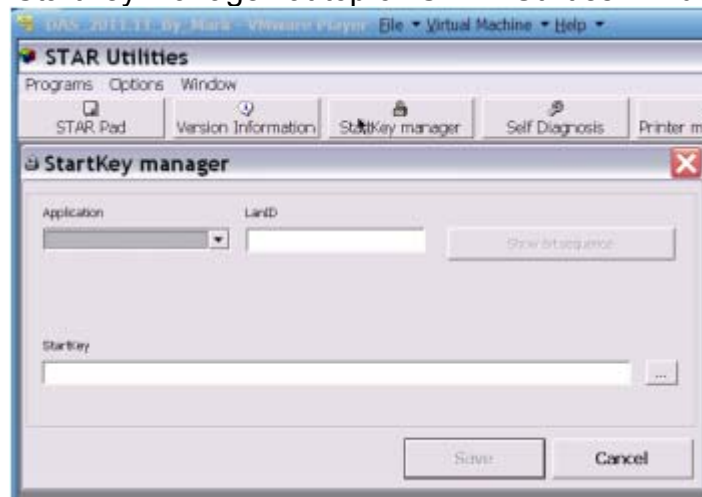


Figure 66 Star Utilities StarKey Manager

33 Click 'XENTRY Diagnostics' in 'Application' Drop Down Menu.



Figure 67 Star Utilities StarKey Manager Xentry

34 01:06 Open up window 'Xentry Developer V1.1.0' parked on right of screen by clicking on Tab at bottom of Virtual Desk Top.



Figure 68 Xentry Developer Tab

35 Manually copy 'HW-ID' details from 'StartKey Manager' to 'Hardware ID' in 'Xentry Developer V1.1.0'.

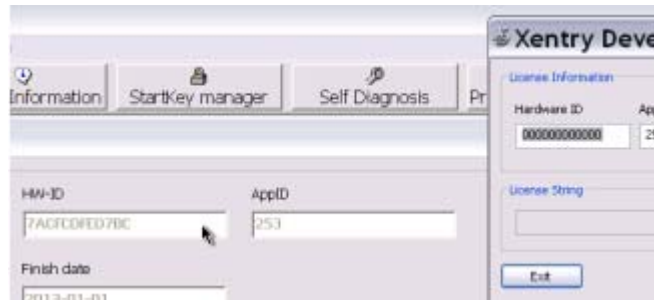


Figure 69 StartKey Manager HW-ID

36 Manually copy 'AppID' details from 'StartKey Manager' to 'App ID' in 'Xentry Developer V1.1.0'. [Change 'App ID' to 253 or same as 'StartKey Manager']. Don't worry about dates. **Wrong!** Change 'Expiration Date' to 2013 01 01.

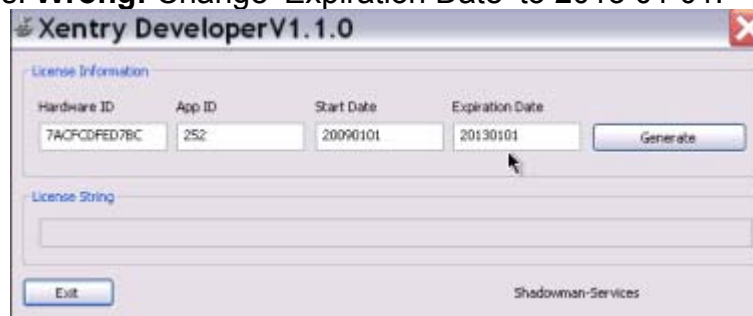


Figure 70 Xentry Developer App ID

37 Click 'Generate' button in 'Xentry Developer V1.1.0'. Produces a 'License String'. [Note the change in App ID to 253.]



Figure 71 Xentry Developer License String

38 Highlight and copy (Ctrl C) 'License String' produced.

39 Paste (Ctrl V) into field 'StartKey' in 'StartKey Manager' window.



Figure 72 StarKey Manager License String

40 Click 'Save'. Produces 'StarUtils' window with message 'Save successfully'.



Figure 73 Star Utils Save Window

Note if you didn't change any dates at step 36 you get the message; "Save not successfully licCheckLicense XENTRY Diagnostics 6 – StartKey could be decoded but is expired." Go back to step 36 and change expiration date to a future date.

[If you didn't change the 'App ID' get an error "The StartKey is invalid." Go back to step 36 by clicking on Tab 'Xentry Developer V1.1.0' on Virtual Machine Tool Bar and change 'Xentry Developer V1.1.0' 'App ID' to 253 etc.]

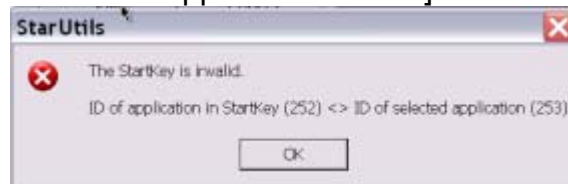


Figure 74 Star Utils Error Message

- 41 Click 'OK' button.
- 42 01:49 Exit several open windows until get back to Virtual Machine Desk Top.
- 43 01:51 Open folder 'mb activate tools' on Desk Top and open folder 'keygen for EPC'.
- 44 Open application 'EWAkeygen.exe'.

EWAkeygen.exe	10 KB	Application	2008-01-30 00:11
---------------	-------	-------------	------------------

Produces a window 'HP-EVA key gen'.



Figure 75 HP-EVA key gen Window

- 45 01:53 Close the folder behind called 'keygen for EPC'.
- 46 Move/drag HP-EVA keygen' window to centre of Desk Top.
- 47 01:59 Open program IE 'EWA net' on Virtual Desk Top by clicking on icon.



Figure 76 Virtual Machine Desktop EWA Icon

Produces IE browser and loads web page 'EWA login' EPC, WIS/ASRA.

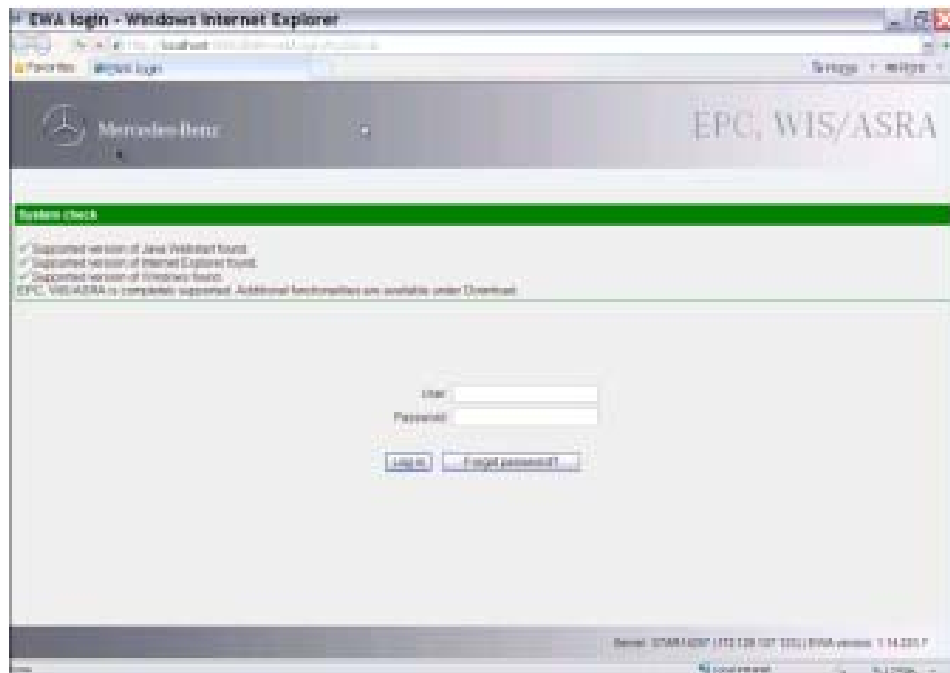


Figure 77 EWA Logon Screen

- 48 Enter 'administrator' **Wrong!** Need to enter 'admin' in User Field.
 49 Enter Password contained in Password.txt file into Password Field. Click on 'Log in'. Returns window 'Welcome to EWA'.

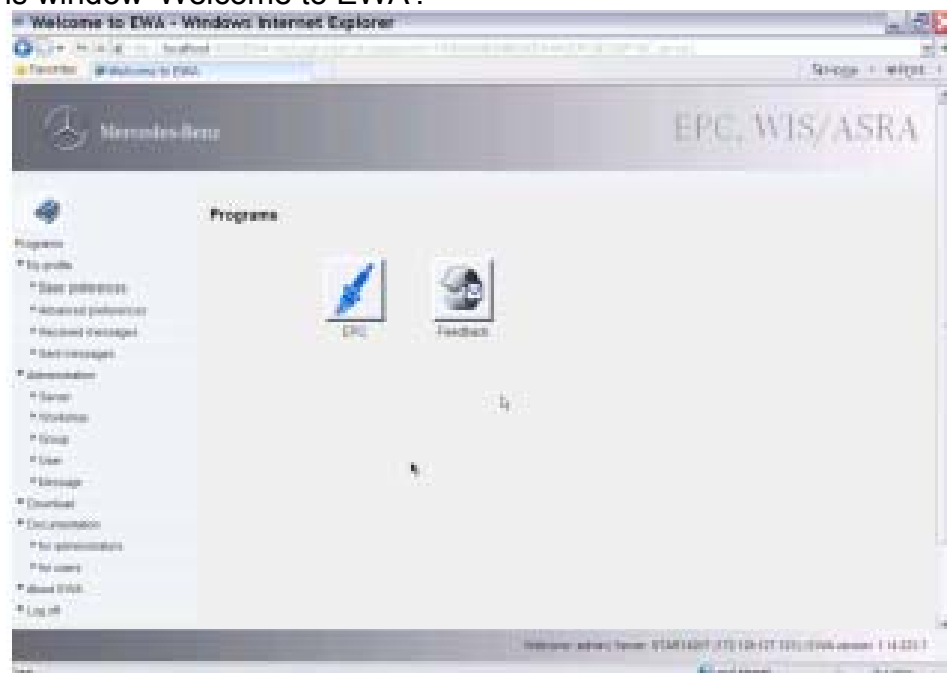


Figure 78 EWA Home Page

If you entered 'administrator' as instructed in step 48 you get message; 'Error *User unknown. Please try again.'

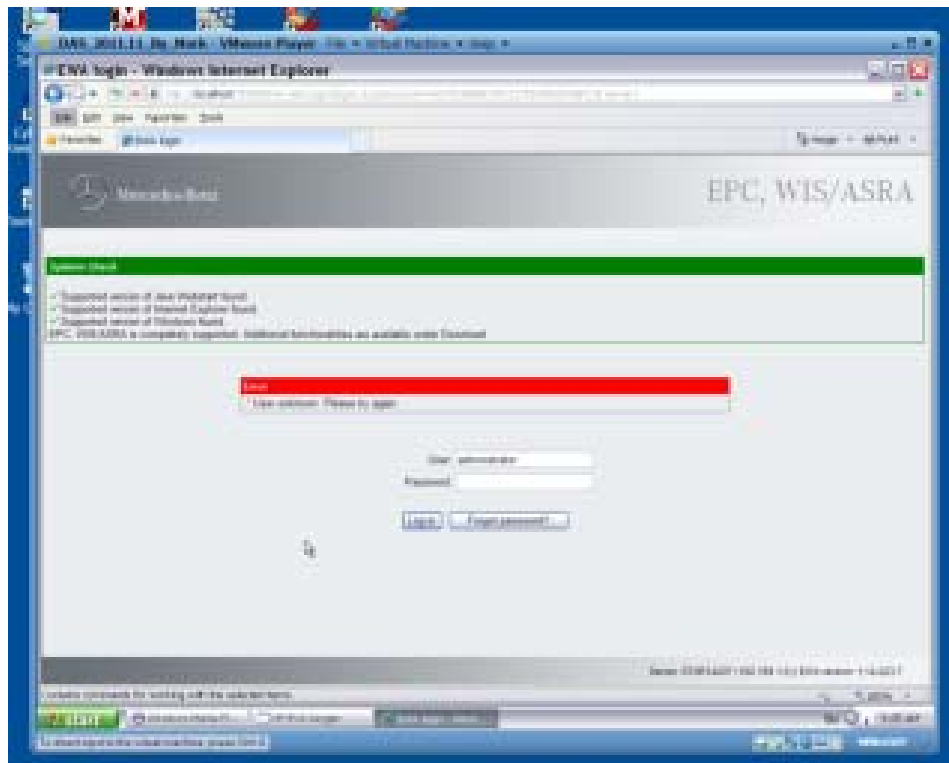


Figure 79 EWA Error Message

50 Click on 'Server' under 'Administration' in left menu.

51 Click on 'Edit the access authorization'. Returns window 'Server, Edit the access authorization, Current MAC address (LAN-ID):, EPC:'.

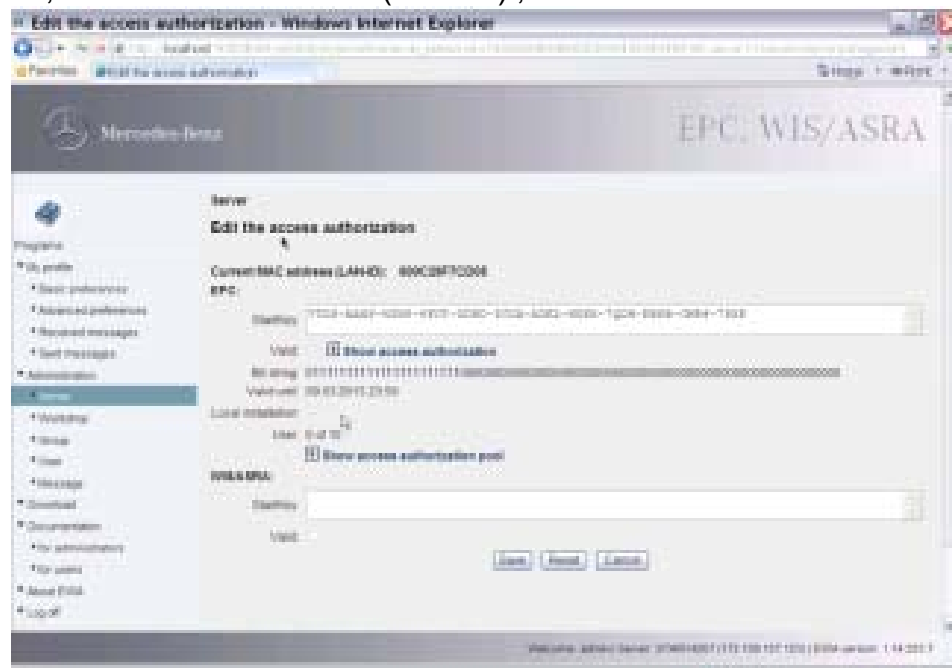
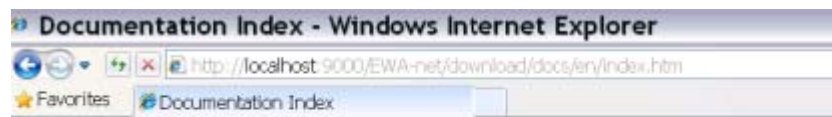


Figure 80 EWA Access Authorization

52 02:18 Scroll down the page to see the menu items on the left. (Use down arrow key to scroll down.)

53 Click on 'for users' under 'Documentation' heading on left. Opens a new IE Window. View this documentation at your leisure.



1 Documentation Index

- [EWA net - Readme](#)
- [Release Notes for EWA net](#)
- [EWANAPI Description / Examples of DMS Calls](#)
- [WIS/ASRA net Joborder File Interface Description](#)
- [EPC net XFR Admin Guide - Shopping List Transfer Interface Description](#)
- [ASRA data spooler documentation \(PDF\)](#)
- [Damage code data spooler documentation \(PDF\)](#)

Figure 81 EWA Documentation Index

Click on 'HP-EVA keygen' Tab at bottom of Virtual Machine Desk Top to bring window 'HP-EVA keygen' to the front.

54 Manually copy 'Current MAC address (LAN-ID)' from the 'Edit the access authorization' window to the field 'ID:' in window 'HP-EVA keygen'.

55 Enter '10' as the 'Number of users:' in window 'HP-EVA keygen'.

56 Enter '2013' as the year in the 'Expiration date:' field.

57 Click button 'generate!'



Figure 82 HP-EVA keygen

Tries to open IE <http://www.carhelp.info/forums/> with the CarHelp website in Russian, but only if Internet is enabled. Close current tab in IE. Produces 'EPCnet:' code and 'WISnet:' code window 'HP-EVA keygen'.

58 Video Tutorial says to click on tab 'STAR Diagnosis - Star Browser' at the bottom of the Virtual Machine Desk Top. 'STAR Diagnosis - Star Browser' window pops up showing 'Access Denied'. **Wrong!** Don't need to do this!

59 02:37 Video says to highlight and right click copy the 'EPCnet:' code. **Wrong!** Would not highlight! [Worked OK in repeat installation.] Had to manually write down the code on a piece of paper. Make sure to only copy the code and not the 'EPCnet:' at the beginning of the string.

Note there is also a code for WIS but this isn't used. [Used in repeat installation.]

60 Delete the existing 'StartKey:' in the window 'Edit the access authorization' and paste in the copied 'EPCnet:' code. **Wrong!** Had to manually enter the code. [Worked OK in repeat installation.]

61 Click the 'Save' button. [In repeat installation get wrong authorization message. Seems OK when WIS/ASRA code was copied across as well.]

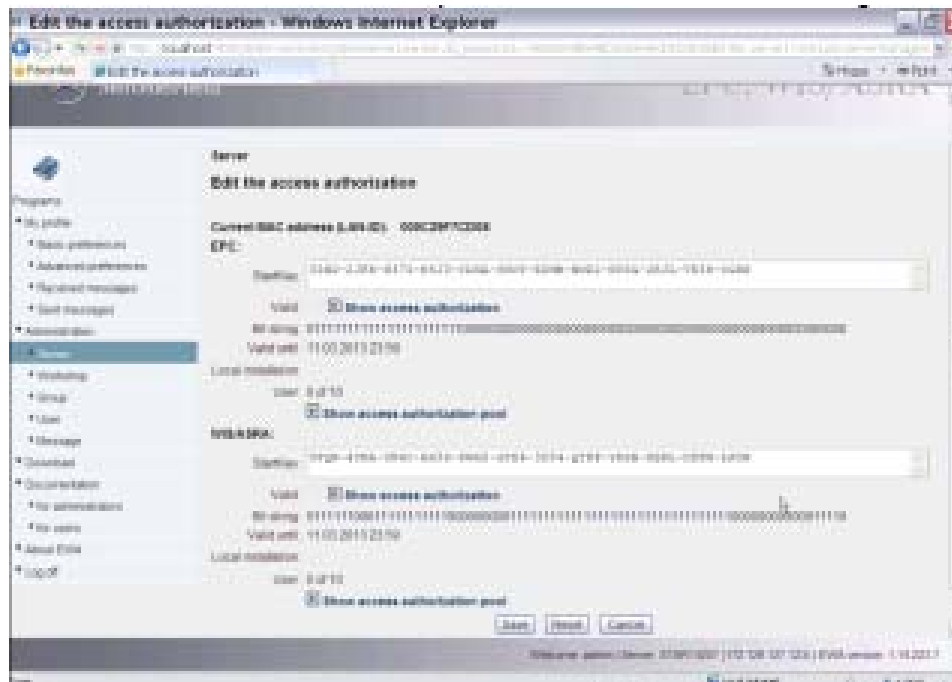


Figure 83 EWA Access Authorization

62 02:52 Click on the 'Programs' menu at the top left. Produces 'Welcome to EWA' window in Internet Explorer showing two large buttons, 'EPC' and 'Feedback'.

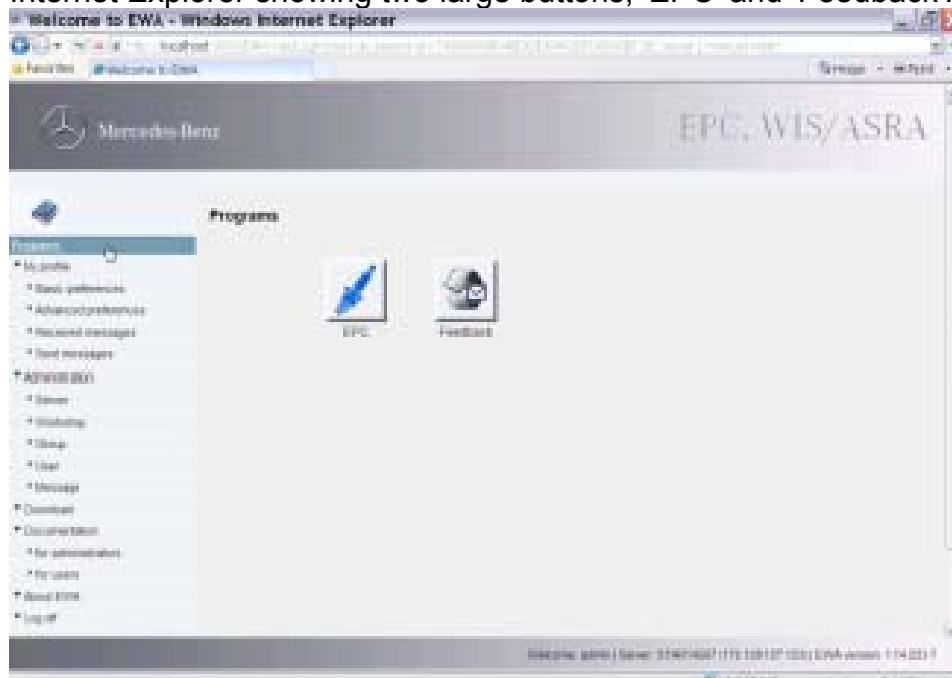


Figure 84 Welcome to EWA

63 Click on button 'EPC' and then close 'Welcome to EWA' window in Internet Explorer. Shows a Window 'EPC Initiallizing.' Opens Window 'EPC – Mercedes-Benz & smart – admin' with a 'Tip of the day' on top.

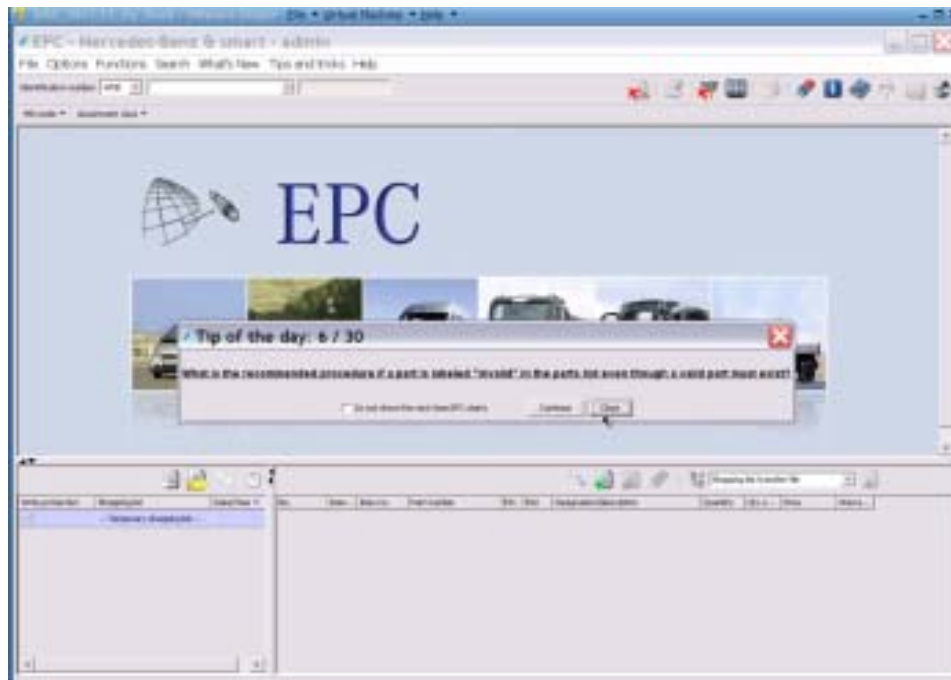


Figure 85 EPC Home Page

65 Close EPC, 'HP-EVA keygen' and the 'STAR Diagnosis - Starbrowser' windows.
Returns to Virtual Machine Desk Top.

66 03:03 End of Video Instructions.

7. Powering Off Xentry

Whenever Xentry has been used it must be powered off before testing another vehicle. Click the 'Running Man' icon in bottom left corner.



Figure 86 Xentry Quit Icon

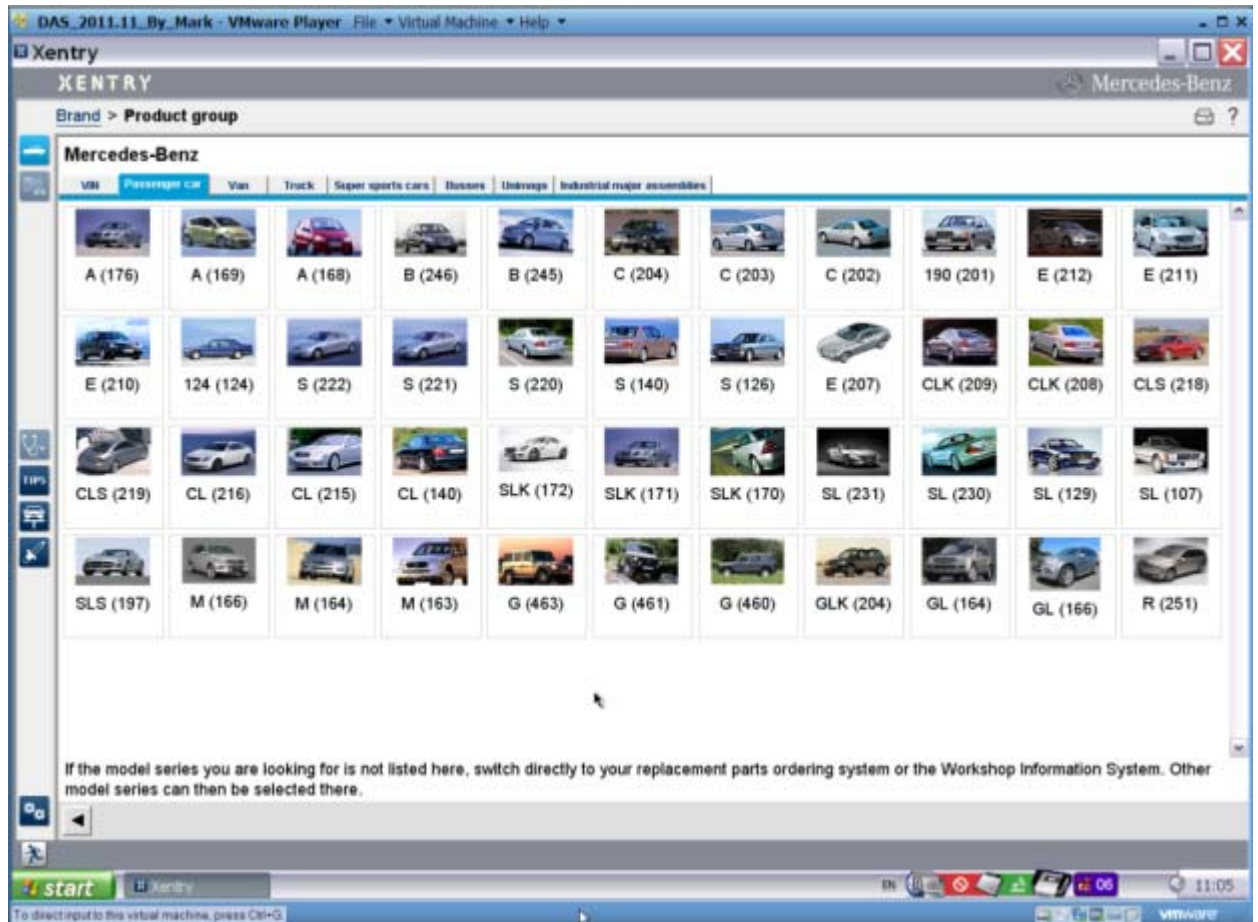


Figure 87 Xentry Home Page

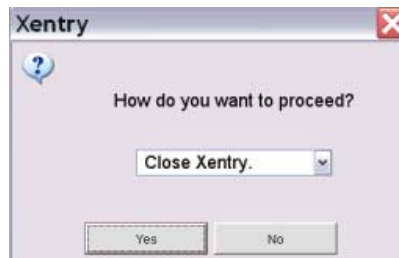


Figure 88 Close Xentry Icon

8. Powering Off Virtual Machine

It is a good idea to ensure that the Virtual Machine is always powered off when closing rather than suspending as it is more stable.

The Virtual Machine is powered off by clicking the Virtual Machine 'Start' button, then 'Turn Off Computer'.

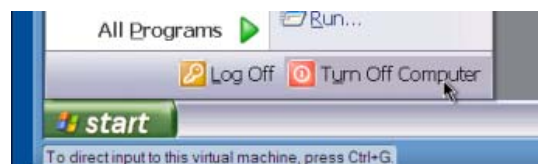


Figure 89 Virtual Machine Start > Turn Off Computer



Figure 90 Virtual Machine Start > Turn Off Computer > Turn Off